



KINGS YACHT AGENCY
SHARPOCK QUAY
NORTHAM, SOUTHAMPTON
SO1 10L TEL: (0703) 331533



Sparkman and Stephens 30

by Aqua-Fibre

KINGS YACHT AGENCY
 SHARROCK QUAY
 NORTHAM BOULWATERS
 SO1 1QL TEL: (0709) 381833

ENGINE: Albin petrol/paraffin 12 hp. Single lever cockpit control easily accessible to helmsman. Engine casing well insulated for sound. Well silenced and water-jacketed exhaust system. Specially designed solid narrow two-bladed propeller. Folding propeller as optional extra. Outboard bearing is rubber, water lubricated. Fuel tank capacity approximately 16 gallons beneath cockpit sole.

ELECTRICAL SYSTEM: 12-volt 60-amp-hour lead acid battery with master switch. Two wire system. All navigation lights and other electrical fittings of highest quality. All cable connections are carried through water-tight glands. Cabin lighting, deck and all berth lights individually switched and controlled from a water-tight Crouch Engineering switch-board.

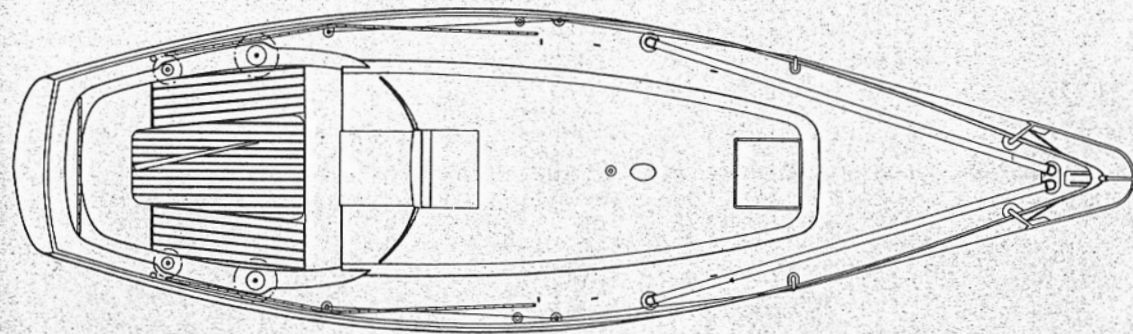
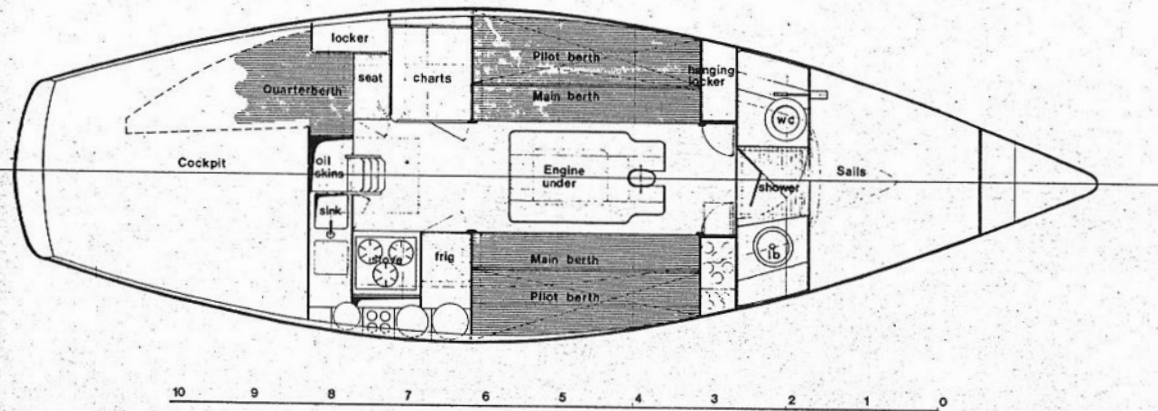
SPARS AND RIGGING: Mast, boom and spinnaker pole of gold anodised aluminium. Mast fully sound-deadened. All fittings stainless steel. Internal halliards. Roller reefing gear, internal clew outhaul and sliding gooseneck. Standing rigging stainless steel 1 x 19 wire. Running rigging galvanised wire and Terylene.

HARDWARE: Precision-made stainless steel stemhead fitting designed by Rod Stephens to enable headsails to be tacked low. All cleats, fairleads, blocks, deck eyeplates and combined jib and genoa track through bolted. Adjustable main sheet traveller. Two Barlow double-speed genoa sheet winches and two halliard winches.

LIFE RAIL: Pushpit and pulpit of polished stainless steel. Double lifelines in stainless steel, complete with insulators. Stainless steel staunchions with chrome-plated cast bronze sockets through bolted. All complying with IOR requirements.

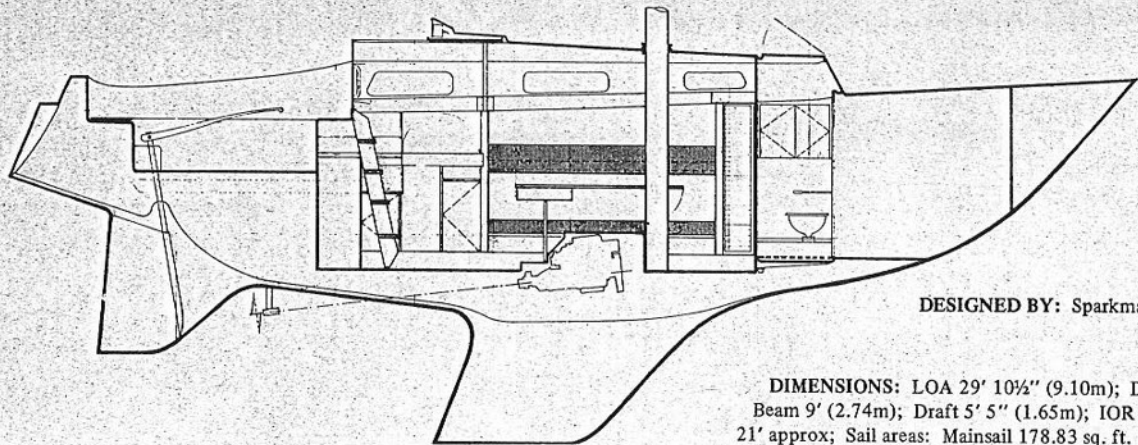
RUDDER: Reinforced glassfibre rudder. Trailing edge finely faired to eliminate drag. Rudder stock in 1 1/4" dia. solid stainless steel mounted on friction-free bearings. Hinged fully lifting tiller.

GENERAL: One 25 lb. Danforth anchor together with 20 fathoms of 1 1/2" circ. Ultron warp and 6 fathoms of 1/4" short link galvanised chain. Two 25 ft mooring warps. Four fenders (2' x 5"). 6' boat hook. Ensign staff and socket.



by Aqua-Fibre

Sparkman and Stephens 30



DESIGNED BY: Sparkman & Stephens Inc.

DIMENSIONS: LOA 29' 10½" (9.10m); DWL 21' (6.40m);
Beam 9' (2.74m); Draft 5' 5" (1.65m); IOR rating
21' approx; Sail areas: Mainsail 178.83 sq. ft.
Foretriangle (100% J) 216.9 sq. ft.

DECK AND HULL: Moulded finest quality, high-strength, reinforced glassfibre to Lloyds 100 A1 specification. Integral non-slip surfaces on deck and superstructure. Ample use of teak trim on deck. Colour of top sides and boottop moulded into hull. Mast step and chain plate areas are reinforced with extra heavy glassfibre.

COCKPIT: Spacious, self-draining with teak slats on side benches and teak grating on cockpit sole. Excellent sail storage in main locker. Henderson bilge pump. Engine control and instrument panel located conveniently for helmsman.

KEEL: External lead keel of approximately 3120 lbs. Eight ¾" dia. stainless steel keel bolts.

CABIN INTERIOR: Structural bulkheads of high-strength marine grade plywood. Joinery work to the highest standard with a hand-rubbed varnished teak finish throughout.

FOREPEAK: Open stowage with option of two child-size pipe cots.

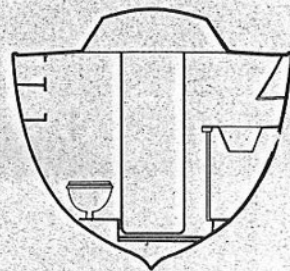
TOILET: Equipped with Lavac toilet, wash basin, mirror and provision for a shower. One-piece GRP moulded unit for easy cleaning.

MAIN CABIN: Two pilot berths, two settee berths. Part of each pilot berth folds down to form backrest for settee. Two hanging lockers with louvred doors. Drinks locker. Ample stowage for five under and behind settee berths. A door separates the toilet from the main cabin. Full cabin lining. Saloon table, with special cup and bottle fiddle down middle, stows neatly when not in use. All mattresses of superior quality four-inch foam covered in high-grade Vynide. Full standing head room.

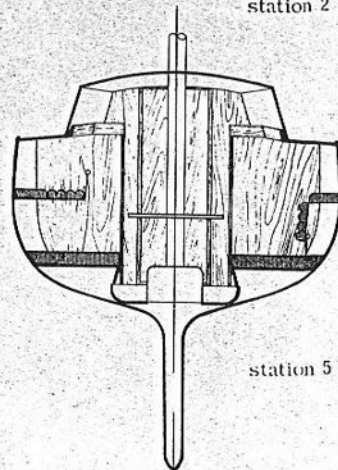
GALLEY: Large fully-gimballed stove. Deep stainless steel sink, white Formica working surfaces, cupboards and drawers including cutlery drawer. Vertical surfaces feature tumbler and dish racks, shelves and lockers. Pot and pan stowage. Ice box with drain (refrigerator optional extra). Full standing headroom. A foul-weather gear locker is located aft of companionway ladder.

CHART TABLE: Well-designed, forward facing, full-size chart table, complete with seat. Plentiful flat stowage for charts and drawers for equipment. Attractively finished in hand-rubbed, varnished teak. Full-length quarter berth aft.

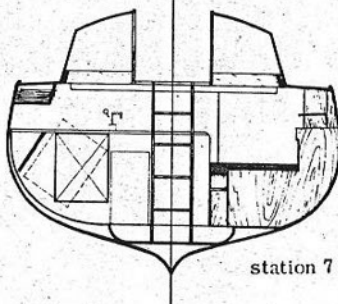
WATER SYSTEM: 40-gallon water capacity in two tanks underneath settee berths. Water piped direct to galley and toilet.



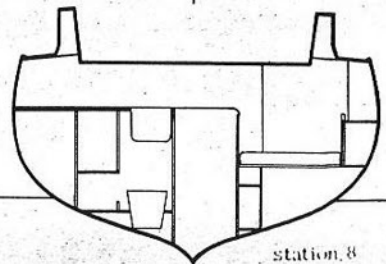
station 2



station 5



station 7



station 8